

## ARTWORK STYLE GUIDE


Northern Australia Infrastructure Facility



**ARTIST** Bernard Lee Singleton  
**DATE** 16 February 2023  
**VERSION** 1



# CONTENTS



About the artist	3
About the artwork	4
Artwork usage – overview	5
Artwork elements	7
Colours	10



## Bernard Lee Singleton

“I paint, craft and make artefacts to ground myself. Through the process of making a spear or shaping the figure of a spirit, I connect with my ancestors and they help bring my work to life. My work is a way for me to acknowledge and remember the times of my great-grandmothers and great-grandfathers. My designs are inspired by the laws of nature and the forms found in the creation stories around me. Using these basic forms or designs, I work to represent the bond of art and the continuation of culture.”

Bernard Lee Singleton is an accomplished craftsman, curator and designer, born and living in Cairns. Singleton grew up in Coen, Cape York. His mother is a Djabuguy woman born in Mona Mona mission near Kuranda and his father is an Umpila (east coast Cape York)/Yirrkandji man from Yarrabah mission.



THE ARTWORK

# Bubani

Please use the following artist attribution when the artwork appears in full:

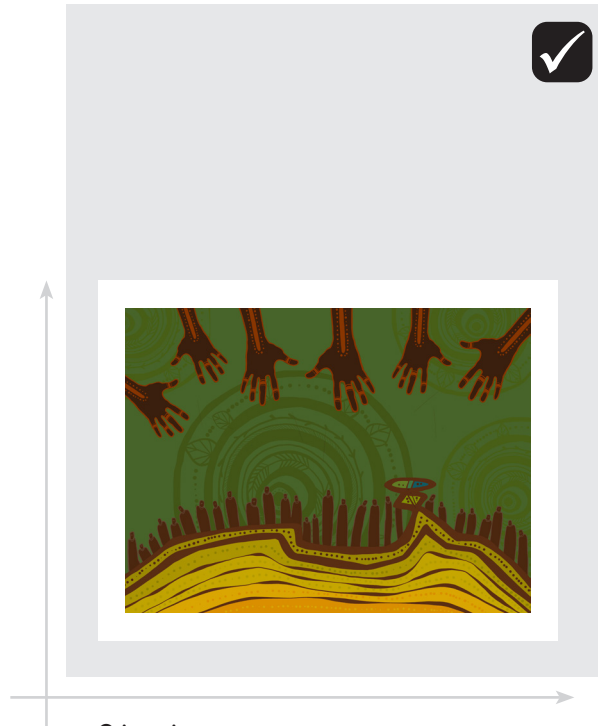
**ARTIST ATTRIBUTION**

*Bubani* by Bernard Lee Singleton with Saltwater People.

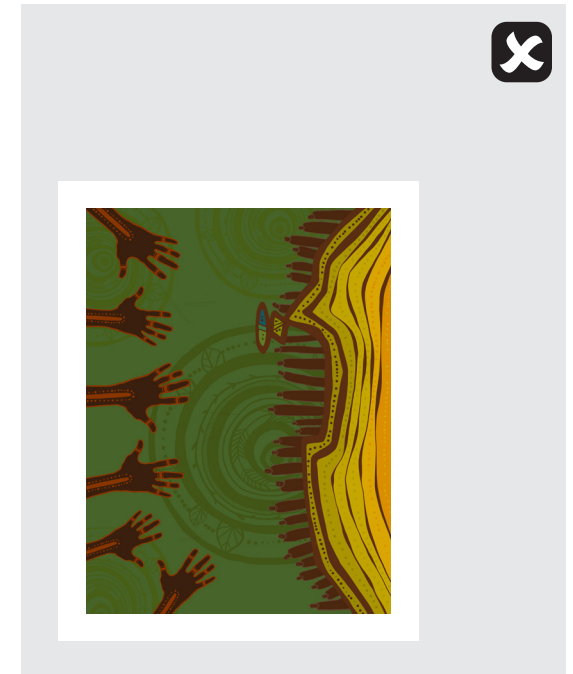


# Orientation - full image

The full artwork — when shown in its entirety — is landscape oriented. It must remain as it is intended and should not be reflected or rotated.



**Orientation**  
Landscape



**Orientation**  
Do NOT rotate or reflect the full artwork



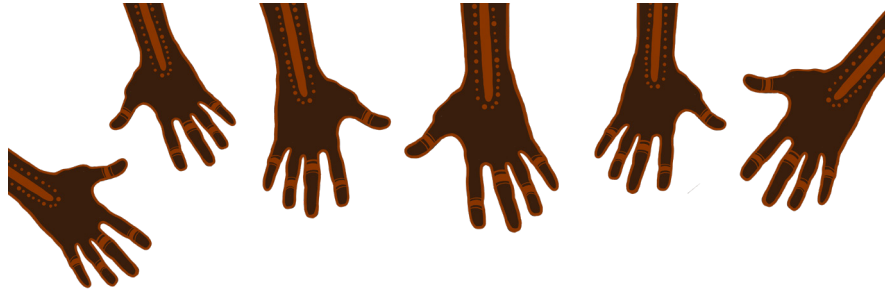
Motifs



# Motifs

The artist has provided separate motifs taken from the artwork to use on their own across design collateral.

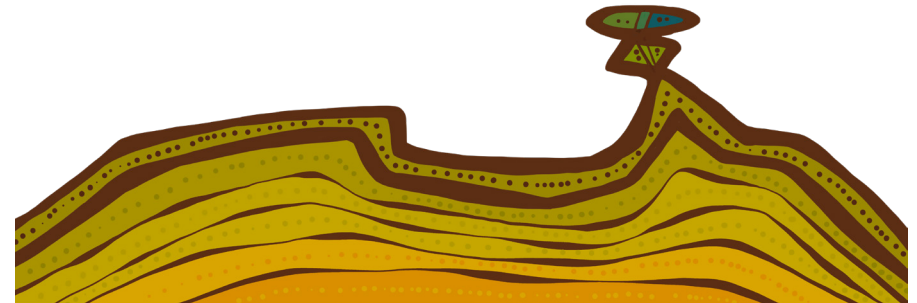
The artist has approved the motifs to be used in the colours from the brand or artwork palette.



Hands



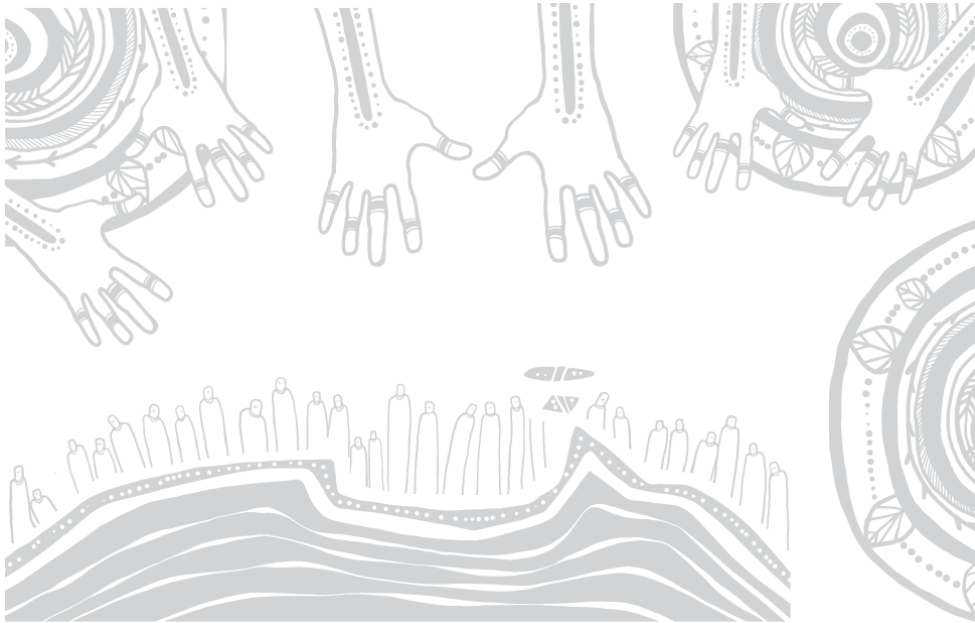
Circles



Landscape

# Approved Uses

The artist has allowed National Australia Infrastructure Facility to use the artwork in the following ways across required collateral.





# Colours

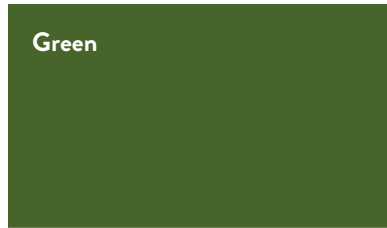


# Colour palette

## NAIF Brand Palette



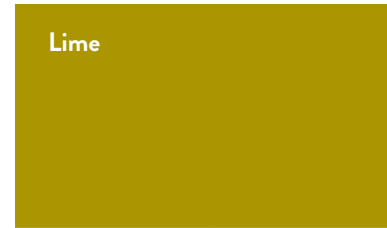
## Artwork Palette



CMYK 71, 39, 100, 30

RGB 71, 100, 42

HEX #47642A



CMYK 35, 34, 100, 5

RGB 171, 149, 1

HEX #AB9501



CMYK 16, 34, 100, 0

RGB 218, 166, 2

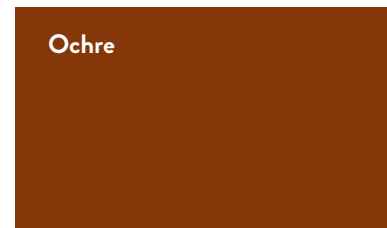
HEX #DAA602



CMYK 14, 47, 100, 1

RGB 218, 143, 0

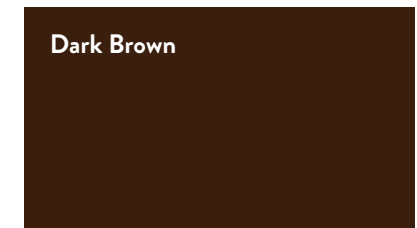
HEX #DA8F00



CMYK 30, 82, 100, 33

RGB 133, 55, 9

HEX #853709



CMYK 51, 72, 80, 72

RGB 58, 31, 14

HEX #3A1F0E

# sa/twater people.

SALTWATER PEOPLE / 2023

ARTIST BERNARD LEE SINGLETON



SALTWATER PEOPLE ACKNOWLEDGE & PAY OUR RESPECTS TO THE ABORIGINAL AND TORRES  
STRAIT ISLANDER PEOPLE AS THE TRADITIONAL CUSTODIANS OF THE LANDS AND SEAS WHERE WE  
LIVE, LEARN AND WORK.

**ALWAYS WAS, ALWAYS WILL BE.**