

### Breast Density Position Statement

**BreastScreen Australia** is a population based screening program, which invites asymptomatic women aged 50 to 74 years to have biennial mammography screening. The program aims to maximise the benefits of early breast cancer detection while minimising potential harm to women.

**Increased breast density** is associated with an increased risk of breast cancer.<sup>1,2</sup> Breast density also has an important impact on screening mammography, as it can lead to a lower accuracy or 'sensitivity' for cancer detection.<sup>3,4</sup> Despite this, **mammography is still the best breast cancer screening test for asymptomatic women aged 50-74, even those with dense breasts.**<sup>5</sup>

**On a mammogram**, fatty tissue appears black whereas fibro-glandular breast tissue or dense breast tissue appears white. Breast density may mask potentially significant lesions including cancers that also appear as white shapes on a mammogram.<sup>3</sup> Although women with dense breast tissue have an increased risk of breast cancer, the risk is thought to be less than having a first degree relative who is diagnosed with breast cancer before menopause (which doubles the risk), or carrying a gene mutation (where the risk is about ten times higher).

**BreastScreen Australia recognises** that in the future, breast density may have a role in determining the frequency and method of an individual's breast screening. Important research is required to investigate these questions, prior to the establishment of any new approach. BreastScreen Australia strongly supports such research, greater discussion, and public awareness of breast density.

**BreastScreen Australia does not provide supplemental screening** using other technologies for women with dense breasts. This is because there is no randomised controlled trial data that shows supplemental screening (such as MRI, ultrasound or tomosynthesis) saves additional lives for asymptomatic women with dense breasts and no other risk factors. Mammography continues to be the only population based screening tool that is effective in reducing mortality from breast cancer for women, including those with dense breasts. **Error! Bookmark not defined.** The potential harms of providing supplemental screening for women with increased breast density include unnecessary and invasive procedures,<sup>7</sup> additional false positive examinations,<sup>8,9</sup> higher rates of benign breast biopsies,<sup>10,11</sup> over-treatment, overdiagnosis and the associated psychological distress, and additional cost to both the woman and the health system.<sup>12</sup> While there is some evidence that these technologies may detect malignancies not found with mammography, the benefit of any additional cancer detection within a population based screening program has not been shown to outweigh the harms. **Error! Bookmark not defined. Error! Bookmark not defined.**<sup>13,14</sup>

**Breast density can be measured in two ways**, either by a radiologist (or screen reading breast physician) analysing an image of the breast to make an estimate of density, or by using commercially available computer software analysis to provide a score. There is currently no reliable method to measure breast density for a population based screening program.<sup>15</sup> When the same mammogram is interpreted by different radiologists or by the same radiologist on different occasions, differing density may be reported (inter and intra-observer variability).<sup>16,17</sup> While computer software analysis can measure each mammogram, it has not yet been proven to consistently measure each woman's breast density from one screening mammogram to the next. For women assessed as having dense breasts, receipt of inaccurate breast density information may create undue anxiety about their risk and worry that mammography may have missed a breast cancer.<sup>18,19</sup> For women with fatty breasts (low breast density), it may convey a false sense of security.

The BreastScreen Australia program aims to provide women with accurate and useful information so that they can make informed decisions about their own breast health and their decision to participate in screening. Before BreastScreen Australia adopts any form of breast density reporting, the method needs to be validated, reliable and evidence-based, with clear benefits for the women participating in the program.

**Having two-yearly screening mammograms through BreastScreen Australia is currently the most effective way to detect breast cancer early in asymptomatic women aged 50-74.** It is also important for women to be aware of the normal look and feel of their breasts because breast cancer can develop at any time.

**The Standing Committee on Screening recommends that,** until such time that more evidence is available on how breast density should be best assessed and managed for individual women, BreastScreen Australia should not routinely record breast density or provide supplemental screening for women with dense breasts.

**Mammography remains the most effective screening test for asymptomatic women aged 50-74 for reducing deaths from breast cancer for asymptomatic women aged 50-74, regardless of breast density.**

For women at high risk based on their family history, individualised surveillance recommendations may apply.

Women who are concerned about their risk of developing breast cancer, or have symptoms of breast cancer should see their GP to discuss appropriate diagnostic or management options.

The Standing Committee on Screening will continue to evaluate any emerging evidence for breast density and provide up-to-date evidence based reliable information for Australian women.

## References

- <sup>1</sup> McCormack, V.A. and dos Santos Silva. (2006) 'Breast density and parenchymal patterns as markers of breast cancer risk: a meta-analysis.' *Cancer Epidemiol Biomarkers Prev*, 15(6): 1159-69.
- <sup>2</sup> Pettersson, A., et al. (2014). 'Mammographic density phenotypes and risk of breast cancer: a meta-analysis.' *Journal of the National Cancer Institute*, 106(5): dju078
- <sup>3</sup> Fry, R. (2001). 'HRT makes mammography less effective.' *ABC Science Online*. Published Friday 12 January 2001. Retrieved: <http://www.abc.net.au/science/articles/2001/01/12/232048.htm?site=science/Askanexpert&topic=latest>
- <sup>4</sup> Mousa, D.S, Mello-Thoms, C., Ryan, EA., Lee, WB., Pietrzyk, MW., Reed, WM., Heard, R., Poulos, A., Tan, J., Li, Y., and Brennan, PC. (2014). 'Mammographic Density and Cancer Detection : Does Digital Imaging Challenge our Current Understanding?' *Academic Radiology* 21(11): 1377-1385
- <sup>5</sup> Smith RA, Duffy SW, Gabe R, Tabar L, Yen AM, Chen TH. (2004). 'The randomized trials of breast cancer screening: what have we learned?' *Radiol Clin North Am* 42(5): 793-806
- <sup>6</sup> Hopper, J.L., (2015). 'Odds per Adjusted Standard Deviation: Comparing Strengths of Associations for Risk Factors Measured on Different Scales and Across Diseases and Populations.' *American Journal of Epidemiology*, 182(10): 863-867.
- <sup>7</sup> Scheel JR, Lee JM, Sprague BL, Lee CI, Lehman CD. (2015). 'Screening ultrasound as an adjunct to mammography in women with mammographically dense breasts.' *Am J Obstet Gynecol*, 212: 9-17.
- <sup>8</sup> Siu, AL. et al. (2016). 'Screening for Breast Cancer: U.S. Preventive Services Task Force Recommendation Statement.' *Ann Intern Med*, 164: 279-296.

*This position statement was developed by BreastScreen Australia and the Royal Australian and New Zealand College of Radiologists' Breast Imaging Reference Group, with input from [insert organisations here].*

*Endorsed by the Standing Committee on Screening of the Community Care and Population Health Principal Committee of the Australian Health Ministers' Advisory Council on XXX 2016*

<sup>9</sup> Melnikow JM, Fenton JJ, Whitlock EP, et al. (2016). 'Supplemental Screening for Breast Cancer in Women With Dense Breasts: A Systematic Review for the U.S. Preventive Services Task Force.' *Agency for Healthcare Research and Quality*, Rockville, MD,

<sup>10</sup> Burkett, B.J., and Hanemann, C.W. (2016). 'A Review of Supplemental Screening Ultrasound for Breast Cancer: Certain Populations of Women with Dense Breast Tissue May Benefit.' *Acad Radiol*.  
<http://dx.doi.org/10.1016/j.acra.2016.05.017>

<sup>11</sup> Scheel JR, Lee JM, Sprague BL, Lee CI, Lehman CD. (2015). 'Screening ultrasound as an adjunct to mammography in women with mammographically dense breasts.' *Am J Obstet Gynecol*, 212: 9-17.

<sup>12</sup> American College of Radiologists. (2012) 'ACR Statement on Reporting Breast Density in Mammography Reports and Patient Summaries,' April 24, 2012. Retrieved from <http://www.acr.org/About-Us/Media-Center/Position-Statements/Position-Statements-Folder/Statement-on-Reporting-Breast-Density-in-Mammography-Reports-and-Patient-Summaries>

<sup>13</sup> Sprague, B. L., Gangnon, R. E., Burt, V., Trentham-Dietz, A., Hampton, J. M., Wellman, R. D., Kerlikowske, K., and Miglioretti, D. L. (2014). 'Prevalence of Mammographically Dense Breasts in the United States.' *JNCI Journal of the National Cancer Institute* 106 (10): dju255 DOI: 10.1093/jnci/dju255  
<http://aje.oxfordjournals.org/content/181/12/956.full>

<sup>14</sup> Sprague, B.L., Stout, N.K., Schechter, C. et al. (2015). 'Benefits, harms, and cost effectiveness of supplemental ultrasonography screening for women with dense breasts.' *Ann Intern Med*. 162(3): 157-66.

<sup>15</sup> Ng, K-H and Lau, S. (2015). 'Vision 20/20: Mammographic breast density and its clinical applications.' *Med Phys* 42(12):7059-7077. doi: 0094-2405/2015/42(12)/7059/19

<sup>16</sup> American College of Radiology. (2013). 'BI-RADS – Mammography' Retrieved from <http://www.acr.org/~media/ACR/Documents/PDF/QualitySafety/Resources/BIRADS/01%20Mammography/02%20%20BIRADS%20Mammography%20Reporting.pdf>

<sup>17</sup> Sprague BL, Conant EF, Onega T, et al. (2016). 'Variation in Mammographic Breast Density Assessments Among Radiologists in Clinical Practice: A Multicenter Observational Study.' *Ann Intern Med*

<sup>18</sup> Trinh, L., Ikeda, D.M., Miyake, K.K., Trinh, J., Lee, K.K., Dave, H., Hanafusa, K., Lipson, J. (2013). 'Patient Awareness of Breast Density and Interest in Supplemental Screening Tests: Comparison of an Academic Faculty and a County Hospital.' *Journal of the American College of Radiology* 12(3): 249-255

<sup>19</sup> Rhodes, DJ, Breitkopf, GR., Ziegenfuss, JY., Jenkins, SM., and Vachon, CM. (2015). 'Awareness of Breast Density and Its Impact on Breast Cancer Detection and Risk.' *Journal of Clinical Oncology* doi: 10.1200/JCO.2014.57.0325

*This position statement was developed by BreastScreen Australia and the Royal Australian and New Zealand College of Radiologists' Breast Imaging Reference Group, with input from [insert organisations here].*

*Endorsed by the Standing Committee on Screening of the Community Care and Population Health Principal Committee of the Australian Health Ministers' Advisory Council on XXX 2016*

# DRAFT BREAST DENSITY FAQS

BreastScreen Australia provides free screening mammography to asymptomatic women aged 50-74 every two years, with the aim of diagnosing breast cancer at an early stage, improving a woman's options for treatments and clinical outcomes. The Program aims to provide women with safe, effective and high-quality care based on current evidence that maximises the benefits of early detection while minimising potential harm to women.

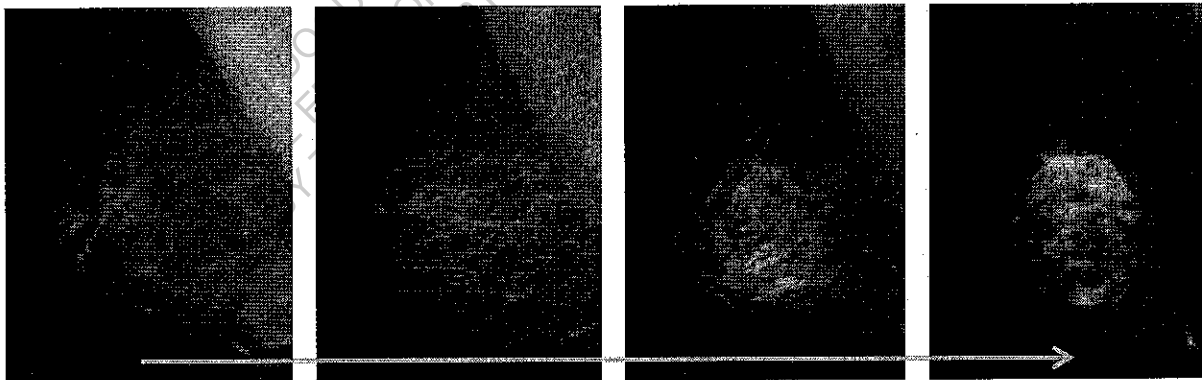
In recent years, it has been identified that breast density is a risk factor for breast cancer. Some countries now require that women are told about their individual breast density when they attend for a screening mammogram. In Australia there are currently no requirements about reporting mammographic density at present. The following information is intended to answer some frequently asked questions about breast density and its impact on breast cancer and mammography in the context of the BreastScreen Australia program.

## 1. What is breast density?

Breasts are made up partly of fat and partly of glands and fibrous, supporting tissue (together called fibroglandular tissue). While fat appears dark on a screening mammogram, fibroglandular tissue appears 'dense' or white.<sup>1</sup>

Each woman's breasts are different and contain a unique mix of fatty and dense tissue. For reasons that are not fully understood, some women will have lots of dense breast tissue, while others will have little.<sup>2,3</sup>

A woman with lower breast density will have more fatty tissue, whereas a woman with higher breast density will have less fatty tissue.<sup>1</sup> Dense breast tissue is common and normal, occurring in around one third of women aged over 50.<sup>2</sup> It usually reduces with age. The images below show normal breasts with different densities.



Least dense

Less dense

More dense

Most dense

## 2. How do women know if their breasts are dense?

Breast density cannot be seen or felt. There are a range of technologies that can be used to measure breast density.

### 3. How is breast density measured?

Breast density can only be measured by a radiologist (or screen-reading breast physician) analysing a woman's mammogram or by using computer software to identify the amount of dense breast tissue. There are generally four categories of breast density:<sup>4</sup>

Level	Amount of glandular (dense) tissue
1	less than 25%
2	25-50%
3	51-75%
4	more than 75%

Least dense  
↓  
Most dense

There is no consensus about the most effective way to measure or manage breast density.<sup>5</sup> Measuring breast density can also be problematic, as a woman may get different results depending on how her image is analysed.<sup>6</sup> If these variations are reported, it is likely to cause confusion and unnecessary anxiety to women.<sup>3,7</sup>

### 4. How common are dense breasts?

There are no statistics on the number of women in Australia with dense breasts because this information is not currently recorded, however research suggests that<sup>8</sup>:

- more than half of women under the age of 50 have dense breasts
- about 40 percent of women in their 50s have dense breasts
- about 25 percent of women age 60 and older have dense breasts

Breasts tend to become less dense as women get older, especially after menopause, as the glandular tissue degenerates and the breasts become more fatty. A range of other factors also contribute to breast density such as hormones, Body Mass Index and genetics.<sup>9</sup>

### 5. Is there value in women knowing their breast density?

Information about a woman's breast density is intended to raise awareness and inform conversations with doctors to decide on appropriate screening options. In Australia, reporting of breast density is not mandatory. Some experts are concerned that telling women they have dense breasts when there is no standardised method to assess breast density, nor evidence to support additional screening, may only serve to raise women's anxiety.<sup>10</sup> Others argue that women have a right to their personal cancer risk information, which they can only obtain from their mammograms.

### 6. Does breast density affect the accuracy of mammography?

Mammography is still the best breast cancer screening test for women aged 50-74, even with dense breast tissue.<sup>11</sup>

Detecting breast cancer using mammograms can be more difficult in women with dense breasts. This is because dense breast tissue appears white on a mammogram, and so too does breast cancer. This means the cancer can be 'masked' by dense breast tissue, making it harder to see.<sup>1,12</sup>

As breast density increases, the ability of mammography to show cancers generally decreases. As a result, women may be given an 'all clear' where cancer is present, or women may be recalled for further testing when there is no cancer present.<sup>12</sup>

### 7. Does breast density increase the risk of breast cancer?

Research shows that increased breast density is associated with an increased risk of breast cancer.<sup>13,14</sup> The risk of developing breast cancer is also influenced by a range of other factors such as

growing older, having a strong family history, being overweight, drinking alcohol and other lifestyle and environmental impacts.<sup>15</sup>

Age is the biggest risk factor for developing breast cancer, with most breast cancers occurring in women over 50.<sup>15</sup> Importantly, most women who develop breast cancer have no known risk factors other than being female and getting older.

It is important for all women to be breast aware and to know the normal look and feel of their breasts. Interval cancers, which can develop in-between screening appointments, can occur in all women, including those with dense breasts, so breast awareness is important. If women are concerned about their breast cancer risk or notice any changes in their breasts they should see their GP.

#### **8. Should women with dense breasts have screening mammograms?**

Yes. Mammography is still the best breast cancer screening test for asymptomatic women aged 50-74, including women with dense breast tissue. Mammography is also the only screening tool that has been demonstrated to lower breast cancer mortality.<sup>14</sup> The BreastScreen Australia program has been found to reduce breast cancer mortality by around 21-28% for women 50-69 years of age.<sup>16</sup>

While the accuracy of mammography can be lower in women with dense breasts, it is still the best test for population-based screening.

It is important for all women to be breast aware and to know the normal look and feel of their breasts. If women are concerned about their breast cancer risk or notice any changes in their breasts they should see their GP.

#### **9. Should women with dense breasts be screened more frequently?**

Currently the best way for asymptomatic women aged 50-74 to detect breast cancer early is to have two-yearly screening mammograms through BreastScreen Australia.

BreastScreen Australia constantly monitors and reviews evidence to ensure the program is delivering safe, high-quality and evidence-based care to women. The program will continue to assess the evidence about assessing and managing women with dense breasts in the context of population based screening. However until there is more robust scientific evidence available, two-yearly mammography is the most effective screening test for asymptomatic women aged 50-74 years, regardless of breast density.

#### **10. Should women with dense breasts have any additional tests?**

Currently there is no evidence that additional tests are warranted for women with dense breasts.<sup>17</sup> Extra screening tests may be considered by an individual woman and her doctor. Some possible options include ultrasound, Magnetic Resonance Imaging (MRI) and digital mammography tomosynthesis (3D mammography). However, there can be significant harms associated with having additional tests including unnecessary and invasive procedures, false positive results<sup>18,19</sup> (a woman is told she has cancer when there is no cancer present), overdiagnosis, over-treatment, additional costs to both the woman and the health system and psychological distress.**Error! Bookmark not defined.**<sup>7,10</sup>

## References

- <sup>1</sup> Mousa, D., Brennan, P.C., Ryan, E.A., Lee, W.B., Tan, J., and Mello-Thoms, C. (2014). 'How mammographic breast density affects radiologists' visual search patterns.' *Acad Radiology* 12: 1386-1393
- <sup>2</sup> Kerlikowske, K., Grady, D., Barclay, J., Sickles, E.A., and Ernster, V. (1998). 'Effect of age, breast density, and family history on the sensitivity of first screening mammography.' *JAMA* 276 (3): 33-38
- <sup>3</sup> Sprague, B. L., Gangnon, R. E., Burt, V., Trentham-Dietz, A., Hampton, J. M., Wellman, R. D., Kerlikowske, K., and Miglioretti, D. L. (2014). 'Prevalence of Mammographically Dense Breasts in the United States.' *JNCI Journal of the National Cancer Institute* 106 (10): dju255 DOI: 10.1093/jnci/dju255 <http://aje.oxfordjournals.org/content/181/12/956.full>
- <sup>4</sup> National Breast Cancer Centre. (2007). 'Synoptic breast imaging report.' Retrieved from [https://canceraustralia.gov.au/sites/default/files/publications/rsig-1-synoptic-breast-imaging-report\\_504af03f19b45.pdf](https://canceraustralia.gov.au/sites/default/files/publications/rsig-1-synoptic-breast-imaging-report_504af03f19b45.pdf)
- <sup>5</sup> Ng, K-H and Lau, S. (2015). 'Vision 20/20: Mammographic breast density and its clinical applications.' *Med Phys* 42(12):7059-7077. doi: 0094-2405/2015/42(12)/7059/19
- <sup>6</sup> American College of Radiology. (2013). 'BI-RADS – Mammography.' Retrieved from <http://www.acr.org/~media/ACR/Documents/PDF/QualitySafety/Resources/BIRADS/01%20Mammography/02%20%20BIRADS%20Mammography%20Reporting.pdf>
- <sup>7</sup> Sprague, B.L., Stout, N.K., Schechter, C. et al. (2015). 'Benefits, harms, and cost-effectiveness of supplemental ultrasonography screening for women with dense breasts.' *Ann Intern Med.* 162(3): 157-66.
- <sup>8</sup> Kerlikowske K, Ichikawa L, Miglioretti DL, et al. Longitudinal measurement of clinical mammographic breast density to improve estimation of breast cancer risk. *J Natl Cancer Inst* 2007; 99:386-395
- <sup>9</sup> Baglietto, L., Krishnan, K., Stone, J., Apicella, C., Southey, M., English, D., Hopper, J., & Giles, G. (2013). 'Associations of Mammographic Dense and Nondense Areas and Body Mass Index With Risk of Breast Cancer.' *American Journal of Epidemiology*. Doi: 10.1093/aje/kwt260
- <sup>10</sup> Trinh, L., Ikeda, D.M., Miyake, K.K., Trinh, J., Lee, K.K., Dave, H., Hanafusa, K., Lipson, J. (2013). 'Patient Awareness of Breast Density and Interest in Supplemental Screening Tests: Comparison of an Academic Faculty and a County Hospital.' *Journal of the American College of Radiology* 12(3): 249-255
- <sup>11</sup> Smith RA, Duffy SW, Gabe R, Tabar L, Yen AM, Chen TH (2004). 'The randomized trials of breast cancer screening: what have we learned?' *Radiol Clin North Am* 42(5): 793–806
- <sup>12</sup> Fry, R. (2001). 'HRT makes mammography less effective.' *ABC Science Online*. Published Friday 12 January 2001. Retrieved: <http://www.abc.net.au/science/articles/2001/01/12/232048.htm?site=science/Askanexpert&topic=latest>
- <sup>13</sup> Boyd, N., Guo, H., Martin, L., Sun, L., Stone, J., Fishell, E., Jong, R., Hislop, G., Chiarelli, A., Minkin, S., and Yaffe, M. (2007). 'Mammographic Density and the Risk and Detection of Breast Cancer.' *The New England Journal of Medicine* 356(3): 227-236
- <sup>14</sup> McCormack, V.A. and dos Santos Silva, I. (2006). 'Breast Density and Parenchymal Patterns as Markers of Breast Cancer Risk: A Meta-analysis.' *Cancer Epidemiol Biomarkers Prev*
- <sup>15</sup> Cancer Australia. (2016). *Risk factors*. <https://canceraustralia.gov.au/affected-cancer/cancer-types/breast-cancer/your-risk-and-breast-cancer/risk-factors>
- <sup>16</sup> Australian Institute of Health and Welfare. (2009). *BreastScreen Australia Evaluation Final Report*.
- <sup>17</sup> American College of Radiologists. (2012) *ACR Statement on Reporting Breast Density in Mammography Reports and Patient Summaries*, April 24, 2012. Retrieved from <http://www.acr.org/About-Us/Media-Center/Position-Statements/Position-Statements-Folder/Statement-on-Reporting-Breast-Density-in-Mammography-Reports-and-Patient-Summaries>
- <sup>18</sup> Siu, AL. et al. *Screening for Breast Cancer: U.S. Preventive Services Task Force Recommendation Statement*. *Ann Intern Med* 2016; 164: 279-296.
- <sup>19</sup> Melnikow JM, Fenton JJ, Whitlock EP, et al. *Supplemental Screening for Breast Cancer in Women With Dense Breasts: A Systematic Review for the U.S. Preventive Services Task Force*. Agency for Healthcare Research and Quality, Rockville, MD, 2016.

THIS DOCUMENT HAS BEEN RELEASED UNDER  
THE FREEDOM OF INFORMATION ACT 1982  
BY THE DEPARTMENT OF HEALTH