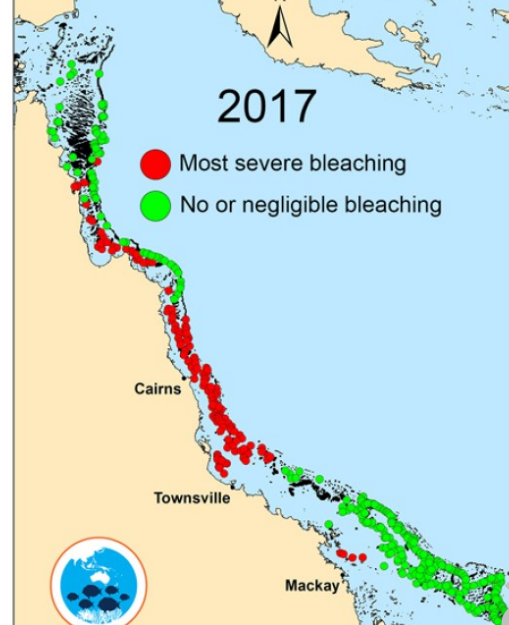
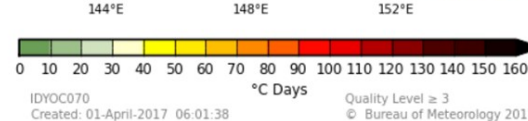
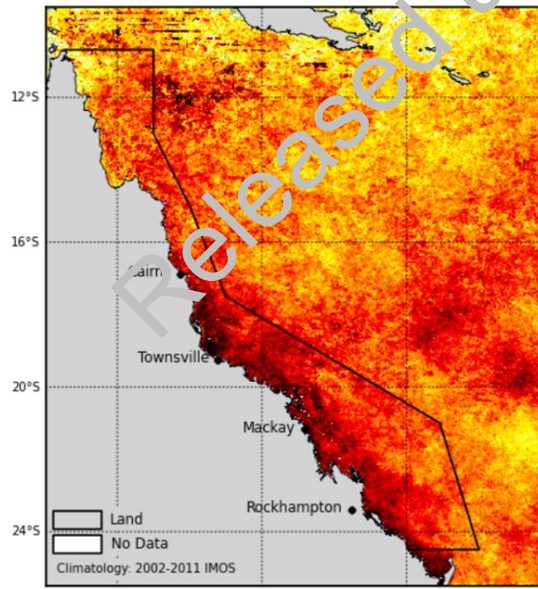
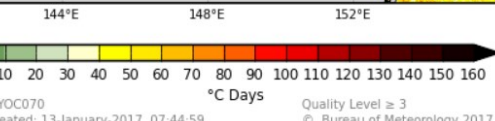
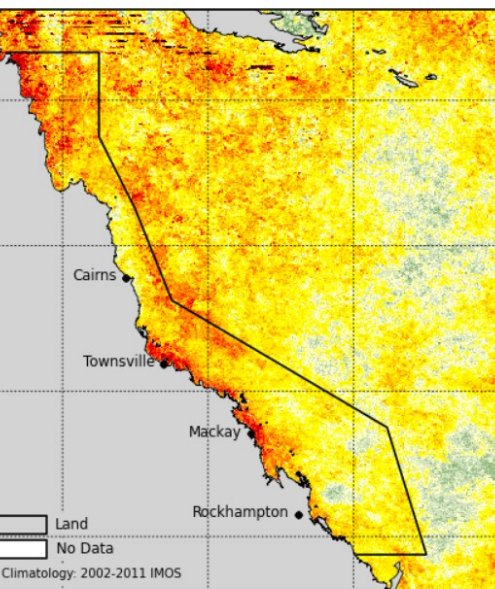


IMOS 14-Day Mosaic: DHD  
31 March 2016 GBR region



IMOS 14-Day Mosaic: DHD  
31 March 2017 GBR region



Bleaching death on this scale  
not detected in a set of AIMS  
coral cores (400 years old)

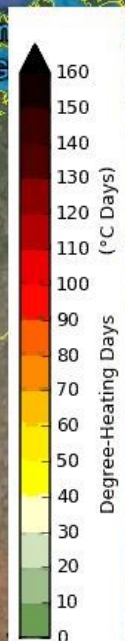
- Bleaching in 2016-17
  - successive years, different places
- 2014-16 +ve coral growth post cyclones, then about 50% loss of coral in 2016; 2017 -- surveys done annually reporting in about 6 months

Coral loss Likely a further 20% (excl TC Debbie) in 2017

Note: heat accumulation by 31 March greater than 2016







Summer 2016-17  
 (Bleaching, Disease, COTS, Cyclone)

